



Skills for Learning Professionals

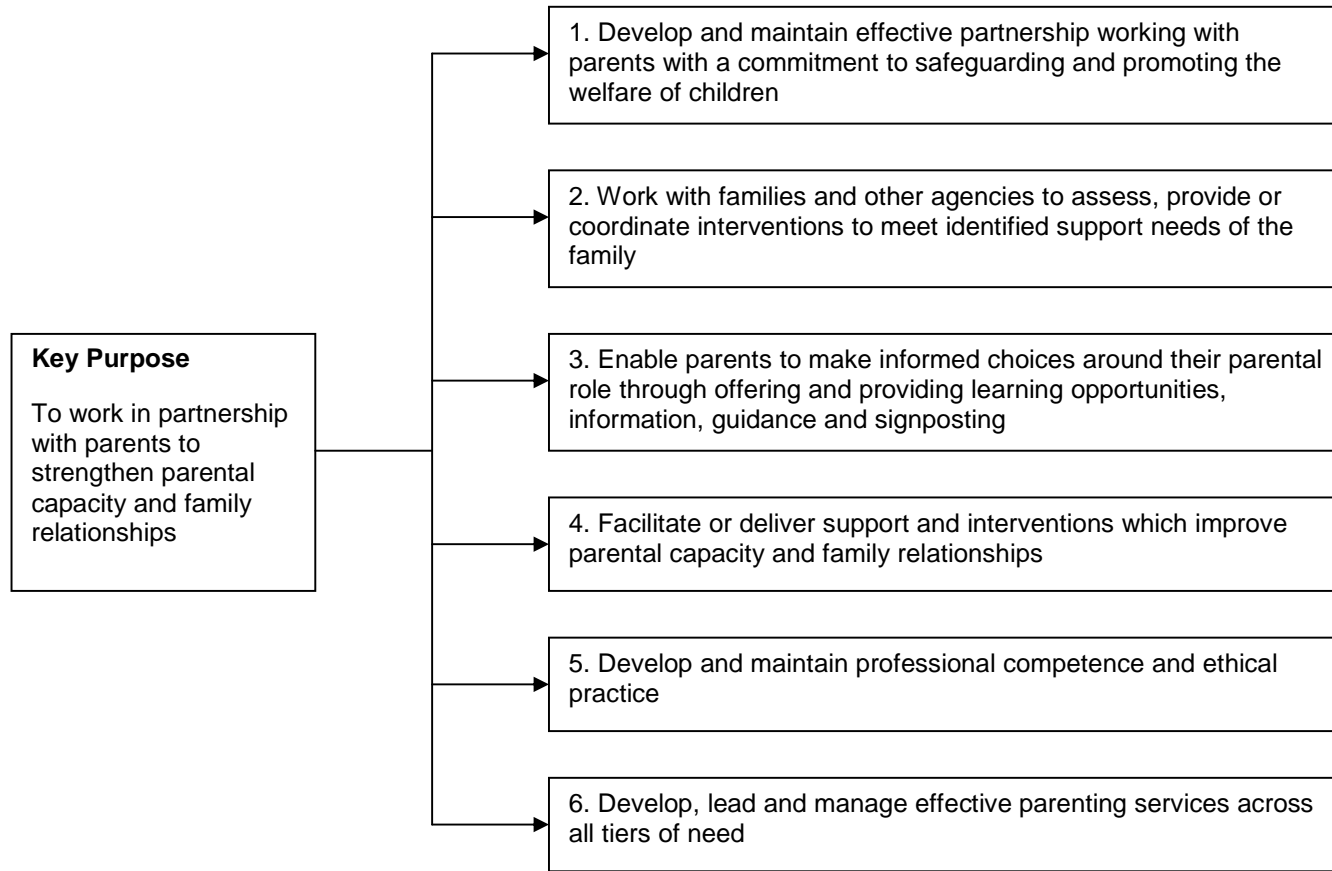
WORK WITH PARENTS FUNCTIONAL MAP (2010)

A functional map is a detailed description of the functions of a particular job role. It starts with a key purpose statement for the role which aims to summarise everything that individuals in the area of work aim to achieve as an outcome. The key purpose is followed by a series of strands describing the various functions in increasing detail, which identify what people need to do in order to achieve the key purpose. Functional maps are generally used to construct National Occupational Standards (NOS) and inform subsequent qualification frameworks.

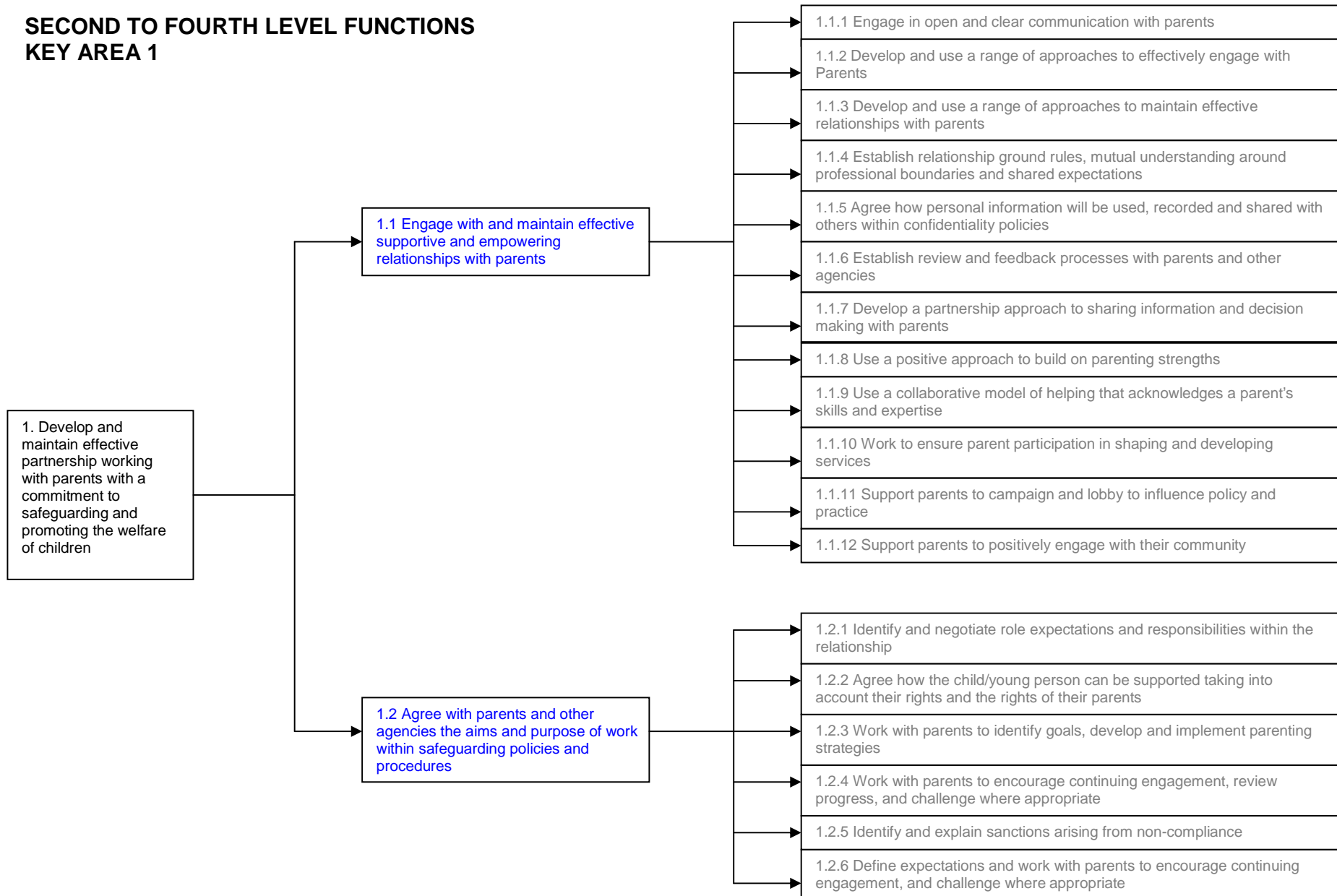
This functional map is drawn from the final draft of the Functional Map for Work with Parents, which was developed by the sector during early 2010. This has been presented in a different 'horizontal' format to encourage recognition of the functions against the draft NOS.

In this functional map, the first level functions describe the main functions undertaken in the sector. The second level functions closely relate to the draft National Occupational Standards which have been presented for public review. The third level functions were developed as part of the initial functional mapping development in early 2010 and can be recognised within the performance criteria statements in the draft NOS.

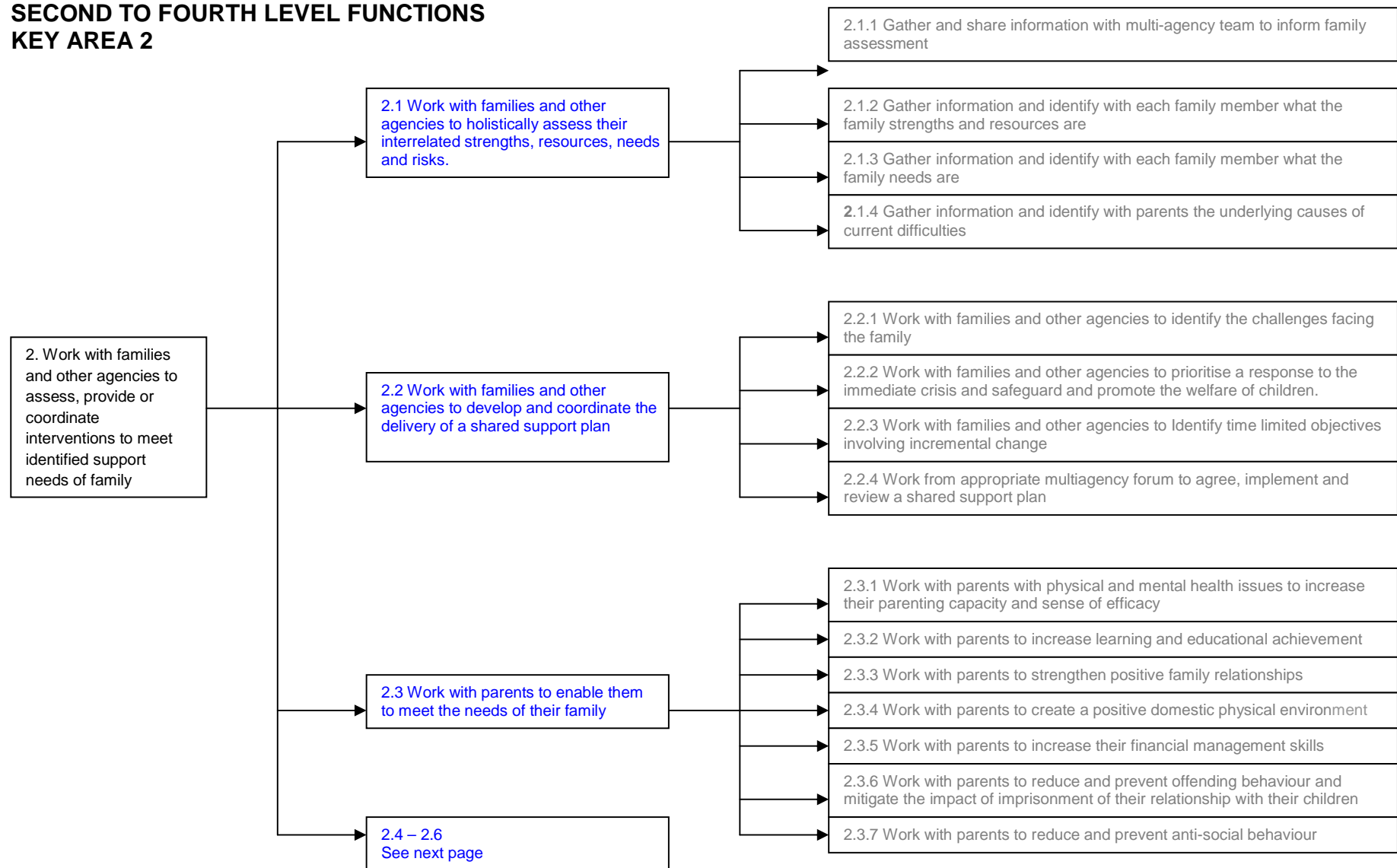
FIRST LEVEL FUNCTIONS



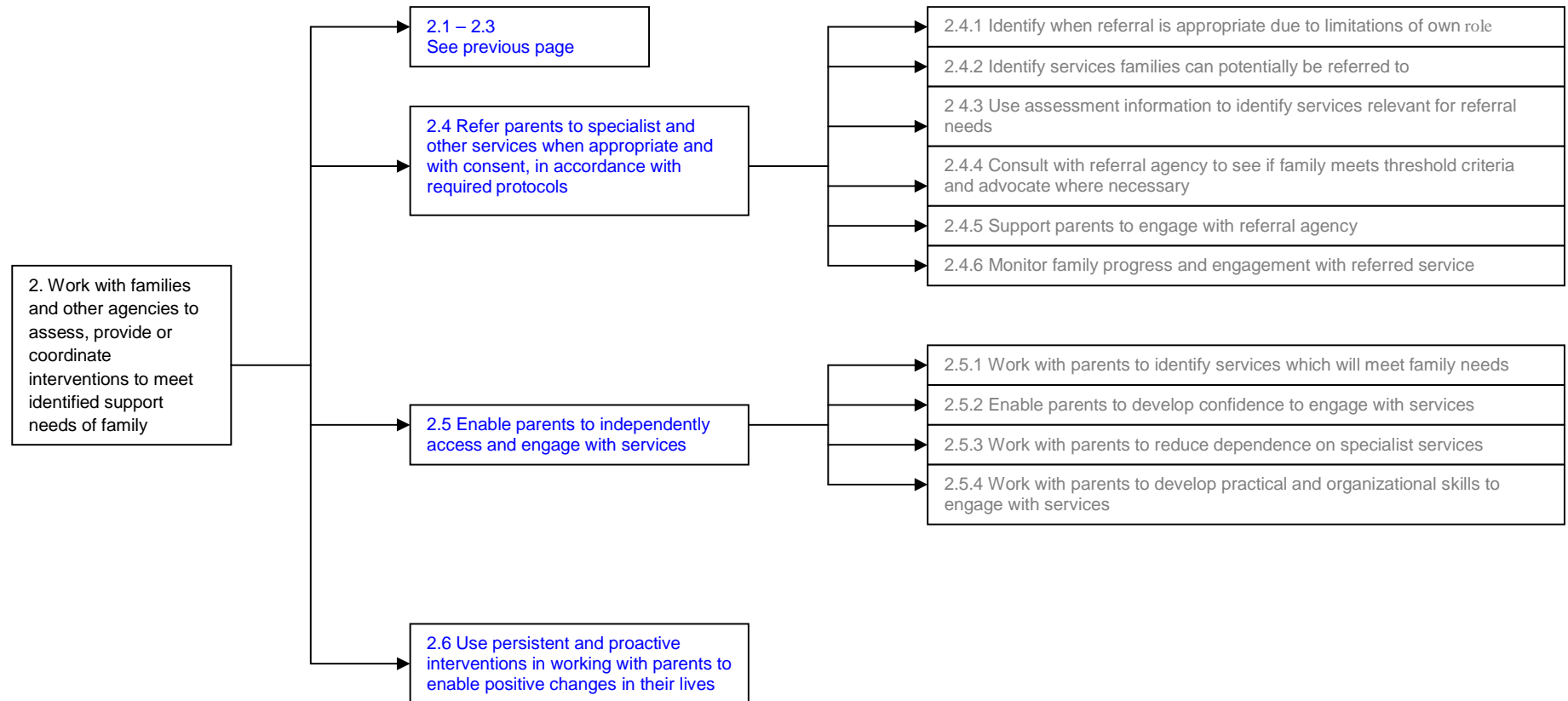
**SECOND TO FOURTH LEVEL FUNCTIONS
KEY AREA 1**



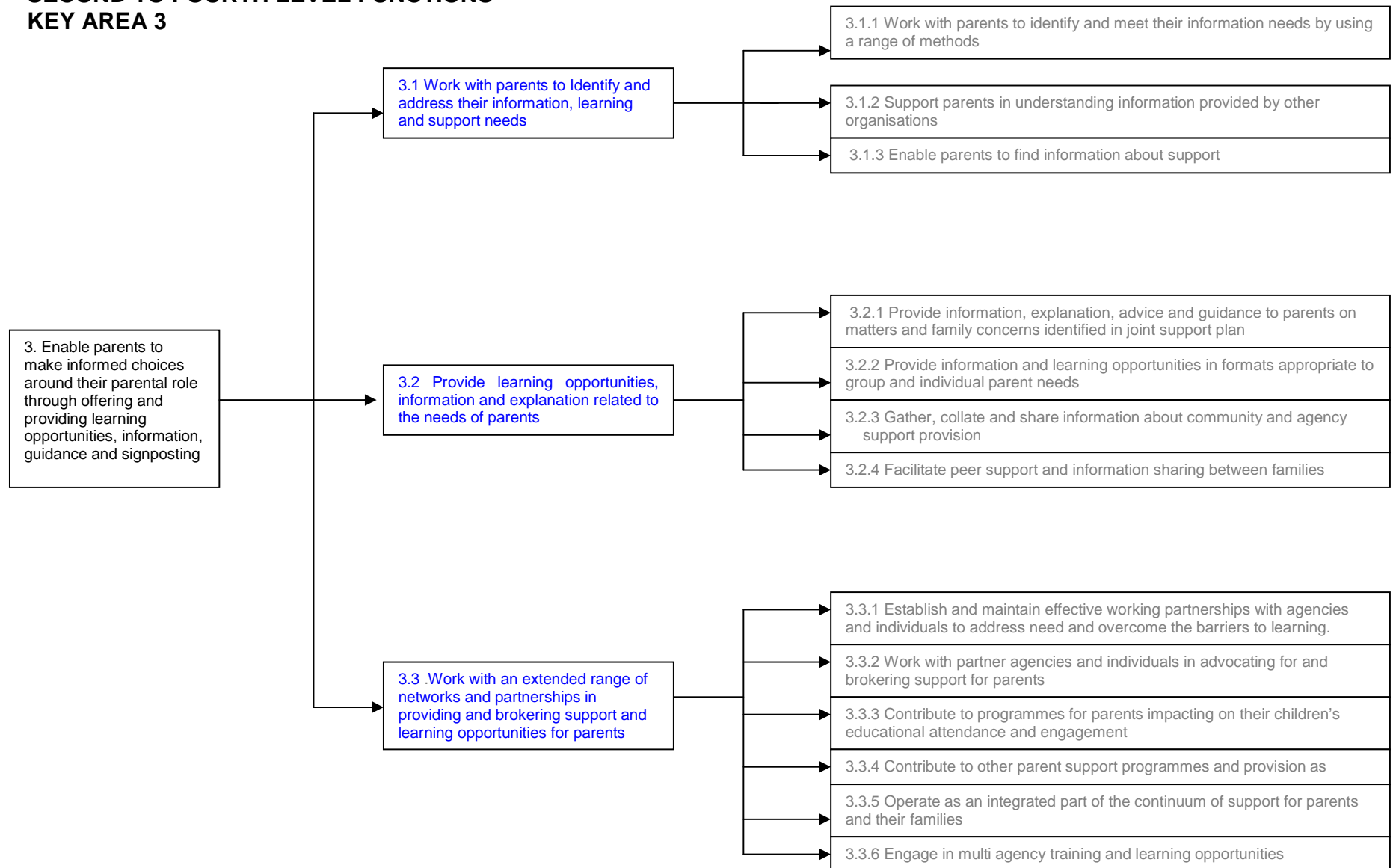
**SECOND TO FOURTH LEVEL FUNCTIONS
KEY AREA 2**



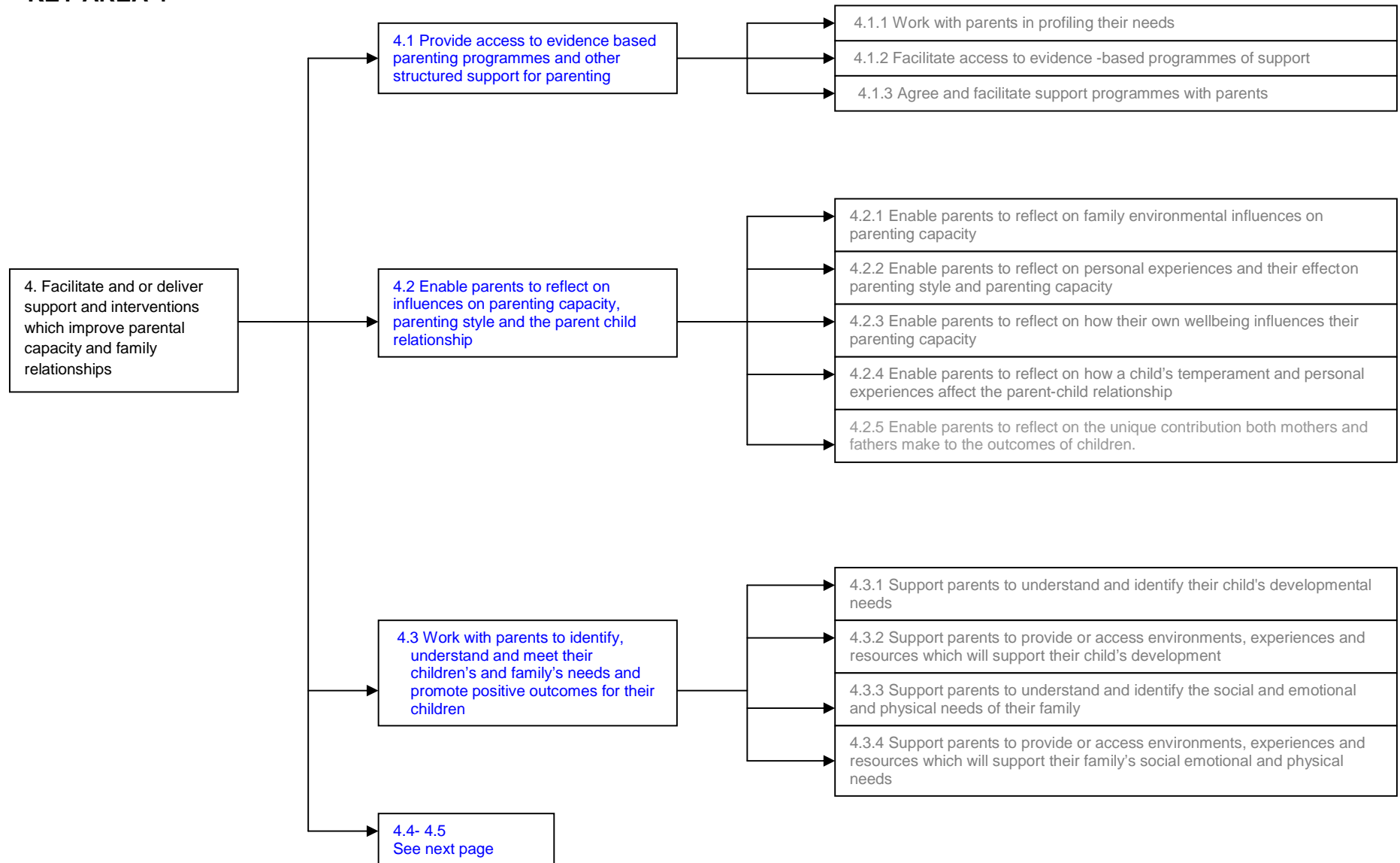
SECOND TO FOURTH LEVEL FUNCTIONS
KEY AREA 2 (continued)



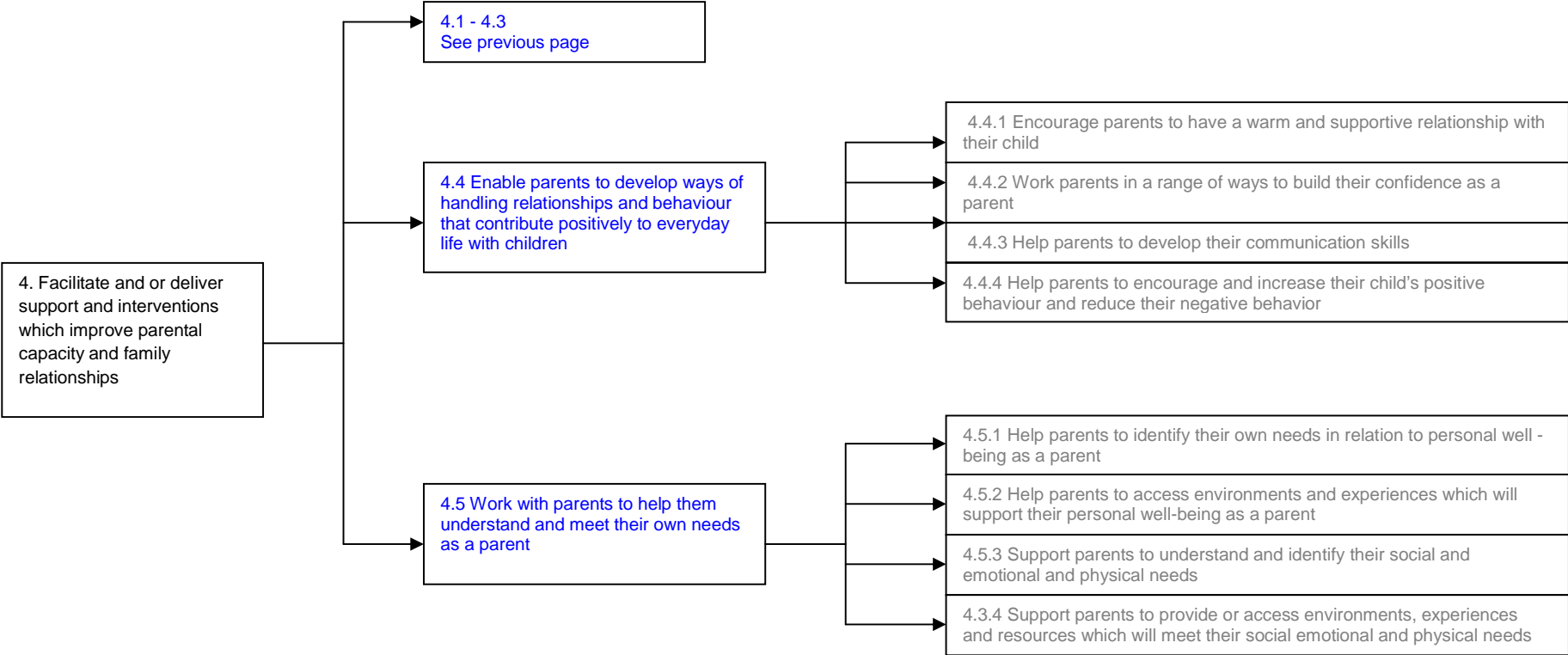
**SECOND TO FOURTH LEVEL FUNCTIONS
KEY AREA 3**



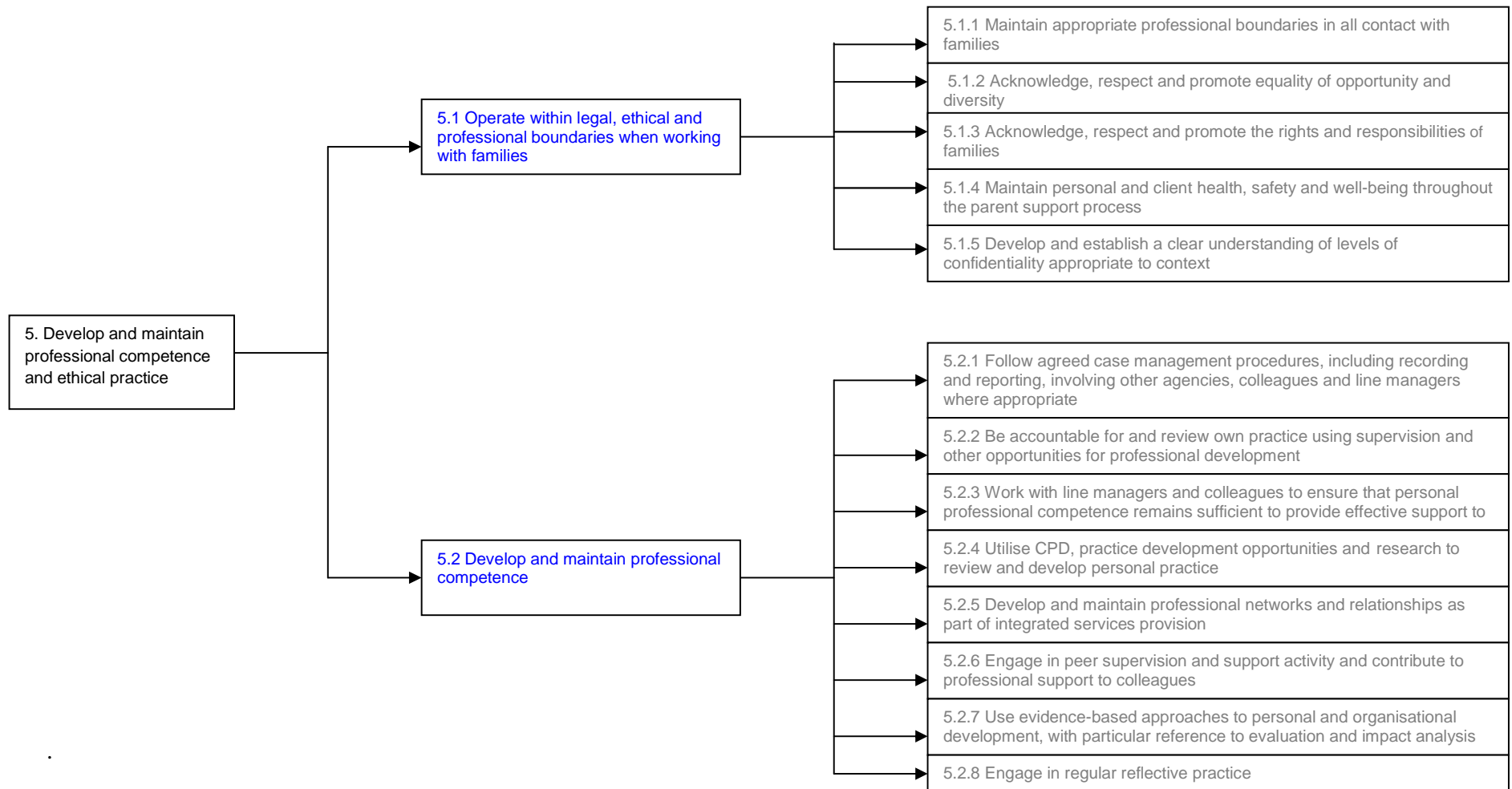
**SECOND TO FOURTH LEVEL FUNCTIONS
KEY AREA 4**



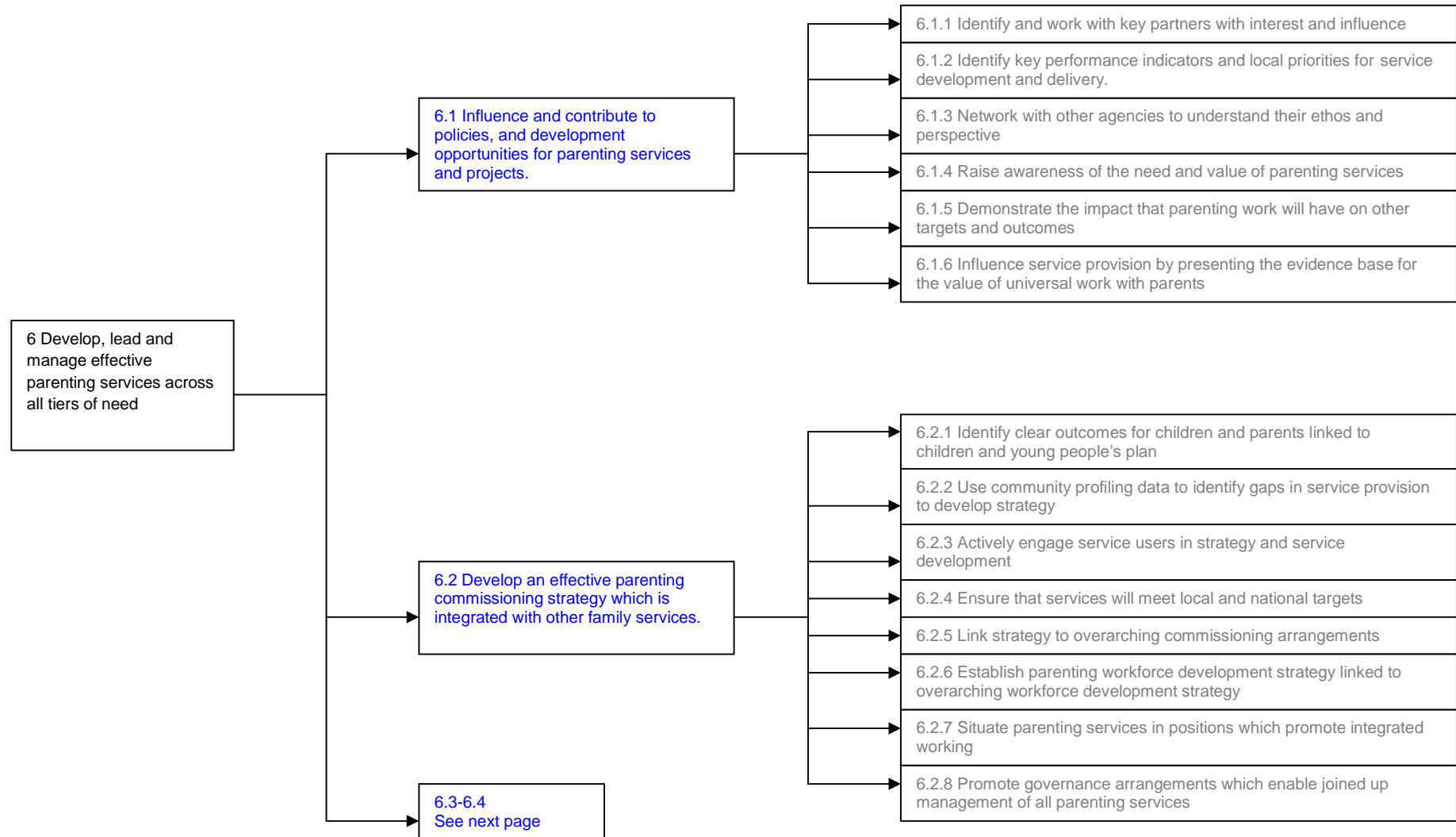
**SECOND TO FOURTH LEVEL FUNCTIONS
KEY AREA 4(continued)**



**SECOND TO FOURTH LEVEL FUNCTIONS
KEY AREA 5**



**SECOND TO FOURTH LEVEL FUNCTIONS
KEY AREA 6**



**SECOND TO FOURTH LEVEL FUNCTIONS
KEY AREA 6(continued)**

